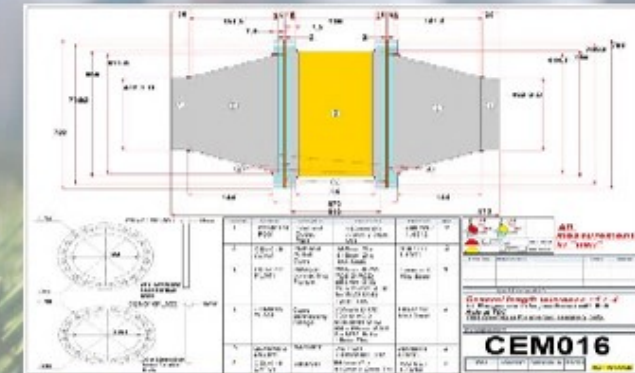


Case Study, 1.5Mw Generator, Retro fit DOC

J420 GS-B11 Generator Engine

Number of main engines	- 1
Engine Power (MCR,100% load) (Kw)	- 1540 kWm
Max Exhaust Temp °C	- 550
Engine operating speed	- 1500
Exhaust gas mass flow (kg/h)	- 8085
Fuel	- Natural Gas
CO emission before catalyst (5%O2dry)	- 1000 mg/Nm3
Required CO emission after catalyst	- 300 mg/Nm3
CH20 emission vbefore catalyst	- 150 mg/Nm3
Required CH20 emission after catalyst	- 60mg/Nm3
Catalyst type	- Oxidation Omet300
Number of catalyst elements per layer	- 1
Total number of catalyst elements	- 1
Catalyst element shape	- Round
Catalyst element weight	- 60kg
Substrate	- Metallic
Approx reactor dimensions (DxH,mm)	- 755 x 510 (inc flanges)
Reactor pressure drop	- 7 mbar @ 100% load
Catalyst Operating life	- 12000 hr
Efficiency	- 70%



cem 
catemission

We can, make a difference..