



CatEMissions PMF system employs metallic filter elements which are manufactured from woven stainless-steel mesh and fiber felt. The filter elements feature large filtration area's (5-10 times larger than ordinary cylindrical filter elements) and have a wide range of filtration precision (1-300um).

The woven mesh is made from stainless steel wire then corrugated into the filter design and has smooth channels for easy cleaning, high temperature resistance, non-shedding of the screen and long filtering cycle. The Stainless Steel fibre used is sintered felt and is a porous deep filtration material which is sintered at high temperature. Its wave breaking core has the characteristics of high porosity, good air permeability, strong decontamination ability and strong regeneration ability.



The PMF operating procedure of particulate reduction takes place by the exhaust gas passing through the external wall of the filter where the soot is captured. The gas then passes into the internal chamber then exits the system.

To obtain the best distribution of the gases, the exhaust gas passes from the inlet tube to a distribution plate where the gases are evenly split and directed to the filter elements.

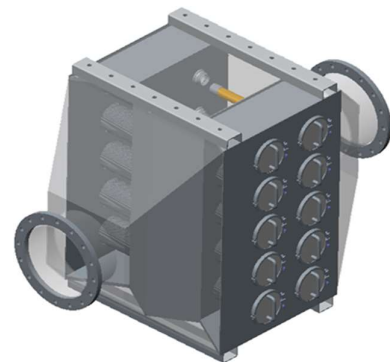
PMF benefits include -

- Operate at any exhaust gas temperature.
- No restrictions to different Diesel fuels.
- Easy clean system.
- Can be fitted with DOC and SCR systems.
- Compact compared to DPF systems.
- Low investment.
- Can be fitted to any Diesel Engine no matter what Kw/Mw power rating.



PMF is supplied as standard with –

- On Board monitoring system (Can be used on either 12 or 24 Volt systems).
- Back pressure alarm system.
- Temperature Sensors.
- Pressure Differential Sensor.
- Safety Pressure release valve
- Matching pipework (Inlet and outlet flanges).



If you have an emission reduction requirement in the Industrial, Construction or Marine sector, or would like to know more about pmf and CatEMission, please contact- info@cat-emission.com